

2MEXH-3616-L

Small size explosion proof camera housing 316L



Model :

2MEXH-3616-L: Small size IP-68 explosion proof camera housing made with 316L stainless steel.

Available models :

| Model | Material |
|--------------|---------------------------|
| 2MEXH-3616 | AISI 304 stainless steel |
| 2MEXH-3616-L | AISI 316L stainless steel |

Features :

- IP-68, NEMA-6P Enclosure rating
- Operating temperature range from -25°C to 60°C (-13°F to 140°F)
- Ex d IIB T6 Gb explosion-proof marking
- AISI 304 or 316L stainless steel construction (available)

Specifications

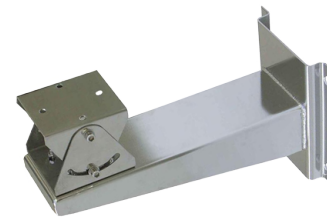
| | |
|------------------------------------|---|
| Atmospheric Pressure | 80 kPa 106 kPa |
| Operating Ambient Temp | -25°C to 60°C (-13°F to 140°F) |
| Relative Humidity | 5 % to 95 % nocondensing |
| Input Power | 220 V AC, 50 Hz (optional) |
| Protection rating | <ul style="list-style-type: none"> • Ex d IIB T6 Gb Explosin-proof marking • IP68, NEMA-6P enclosure rating |
| Dimensions (W x H x L) | (365.5 x 163 x 169.5 mm) (14.39 x 6.42 x 6.67 In) |
| Internal Usable Size (W x H x L) | (260 x 80 x 80 mm) (10.24 x 3.15 x 3.15 In) |
| Window Viewing Area (Ø) | 79mm (3.11 in) |
| Weight | 5.5 Kg (12.13 lb) |
| Material | <ul style="list-style-type: none"> • AISI 304 stainless steel 2MEXH-3616WS • AISI 316L stainless steel 2MEXH-3616WS-L |
| Heater Control | On at 1 °C ± 3 °C (34 °F ± 5 °F) (optional) |

Matching Accessories :

- 2MEXB-2915: Explosion Proof Wall Housing Bracket (304)
- 2MEXPTB-3623: Heavy Explosion Proof Pan and Tilt Unit (304)
- 2MEXB-2915-L: Explosion Proof Wall Housing Bracket (316L)
- 2MEXPTB-3623-L: Heavy Explosion Proof Pan and Tilt Unit (316L)



2MEXPTB-3623
 2MEXPTB-3623-L



2MEXB-2915
 2MEXB-2915-L

2M Technologies Co., Ltd.

802 Greenview Dr, Ste 100
 Grand Prairie T, 75050
 USA Tel: +1 972 206-1212
 Email: Sales@2Mtechnology.net
 WWW.2Mtechnology.net