

2MEXH-4016 Series

Explosion proof integrated camera



Model :

2MEXH-4016 Series: IP-68 Explosion proof camera housing

Optional : Wiper and Sun-shield

Available models :

Model	Material
2MEXH-4016	AISI 304 stainless steel
2MEXH-4016-L	AISI 316L stainless steel

Features :

- IP-68, NEMA-4X Enclosure rating
- Operating temperature range from -40°C to 60°C (-40°F to 140°F)
- Ex d IIC T6 Gb explosion-proof marking
- AISI 304/316L stainless steel construction (available)
- Optional: Wiper and sun-shield

Specifications

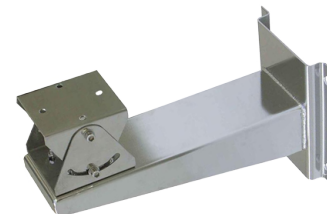
Manufacturers Standard	En60079-0:2009, En 60079-1:2007, En60079-31:2009 GB3836.1--2000, GB383.2--2000, Gb12476.1-2000
Configuration Mode	Front and rear caps with explosin-proof thread
Explosion-proof Mark	II2G Ex d IIC T6, Ta: -40°C ≤Ta≤+60° ; II2D Ex IIIC T80°C Db.
IP Rating	IP-68
Operating Temperature	-40°C to 60°C (-40°F to 140°F)
Cable Entries	2XG1/2" Explosion-proof cable entries, Dia. of inner hole Ø
Outside Dimension (W x H x L)	(450 x 160 x 200 mm) (15.94 x 6.29 x 7.87 In)
Wiper	Outside (Optional)
Weight	8 Kg (18 lb)
Material	AISI 304 stainless steel 2MEXH-4016 or AISI 316L stainless steel 2MEXH-4016-L
Suitable installation dimension	Less than Ø 10.5 cm x 33 cm
Voltage (Optional)	(AC110V to AC 240V, 50/60 Hz) (AC24V, 50/60 Hz)
Current (Optional)	≤500mA

Matching Accessories :

- 2MEXB-2915: Explosion Proof Wall Housing Bracket (304)
 2MEXPTB-3623: Heavy Explosion Proof Pan and Tilt Unit (304)
 2MEXB-2915-L: Explosion Proof Wall Housing Bracket (316L)
 2MEXPTB-3623-L: Heavy Explosion Proof Pan and Tilt Unit (316L)



2MEXPTB-3623
 2MEXPTB-3623-L



2MEXB-2915
 2MEXB-2915-L

2M Technologies Co., Ltd.

802 Greenview Dr, Ste 100
 Grand Prairie T, 75050
 USA Tel: +1 972 206-1212
 Email: Sales@2Mtechnology.net
 WWW.2mtechnology.net