



## Model :

2MEXH-4016-L: IP-68 Explosion proof camera housing. Optional: wiper and sun shield.

## Available models :

Model	Material
2MEXH-4016	AISI 304 stainless steel
2MEXH-4016-L	AISI 316L stainless steel

## Features :

- IP68, NEMA-4X Enclosure rating
- Operating temperature range from -40°C to 60°C (-40°F to 140°F)
- Ex d IIC T6 Gb explosion-proof marking
- AISI 304/316L stainless steel construction (available)
- Optional: Wiper and sun shield

## Specifications

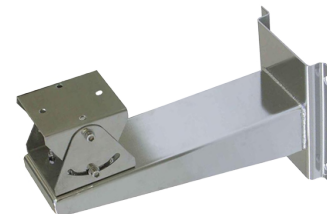
Manufacturers Standard	En60079-0:2009, En 60079-1:2007, En60079-31:2009 GB3836.1--2000, GB383.2--2000, Gb12476.1-2000
Configuration Mode	Front and rear caps with explosion-proof thread
Explosion-proof Mark	II2G Ex d IIC T6, Ta: -40°C ≤Ta≤+60° ; II2D Ex IIIC T80°C Db.
IP Ratio	IP-68
Operating Temperature	-40°C to 60°C (-40°F to 140°F)
Cable Entries	2XG1/2" Explosion-proof cable entries, Dia. of inner hole Ø
Outside Dimension (W x H x L)	(450 x 160 x 200 mm) (15.94 x 6.29 x 7.87 In)
wiper	Outside
Weight	8 Kg ( 18 lb )
Material	<ul style="list-style-type: none"> <li>• AISI 304 stainless steel 2MEXH-4016</li> <li>• AISI 316L stainless steel 2MEXH-4016-L</li> </ul>
Suitable installation dimension	Less than Ø 10.5 cm x 33 cm
Voltage ( Optional )	( AC110V to AC 240V, 50/60 Hz ) ( AC24V, 50/60 Hz )
Current ( Optional )	≤500mA

## Matching Accessories :

- 2MEXB-2915: Explosion Proof Wall Housing Bracket ( 304 )  
 2MEXPTB-3623: Heavy Explosion Proof Pan and Tilt Unit ( 304 )  
 2MEXB-2915-L: Explosion Proof Wall Housing Bracket ( 316L )  
 2MEXPTB-3623-L: Heavy Explosion Proof Pan and Tilt Unit ( 316L )



2MEXPTB-3623  
2MEXPTB-3623-L



2MEXB-2915  
2MEXB-2915-L

## 2M Technologies Co., Ltd.

802 Greenview Dr, Ste 100  
 Grand Prairie T, 75050  
 USA Tel: +1 972 206-1212  
 Email: Sales@2Mtechnology.net  
 WWW.2mtechnology.net