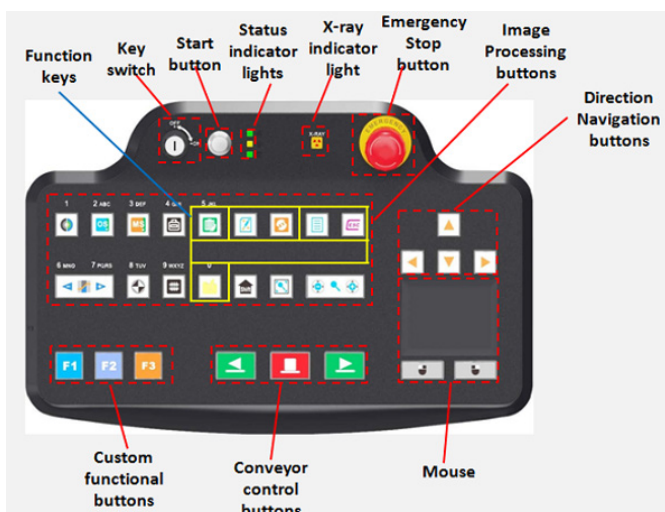


### Features

- Dual monitors
- Secure access key
- Multilingual operation
- Automatic built in test and self-diagnostics
- Uninterruptible power supply (UPS) for computer
- Threat alert and material classification
- Energy saving design
- One key turn off
- Drugs and explosives detection
- Baggage counter
- Time and date stamp

### Keyboard

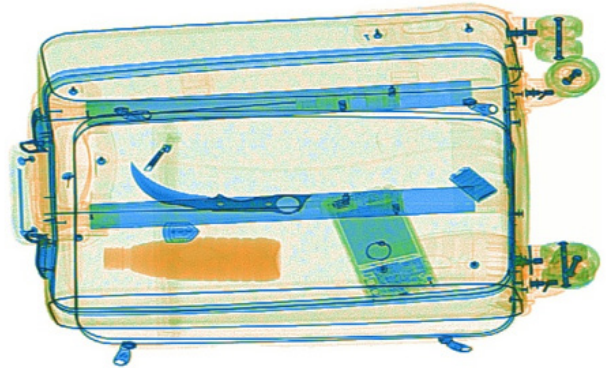


### Specifications

PHYSICAL SPECIFICATIONS	
<b>Tunnel Size (LxH)</b>	1000 x 800 (mm) / 39.4" x 31.5" (in.)
<b>Unit Weight</b>	800 kg/ 1763.7 lbs
<b>Unit Size (LxWxH)</b>	3130 x 1295 x 1716 (mm) / 123.2" x 51" x 67.6" (in.)
<b>Gross Weight</b>	1000kg/2204.6 lbs (Packet on wooden pallet)
<b>Packing Size</b>	#1: 242 x 143 x 198 (cm) / 95.3" x 56.3" x 77.9" (in.) #2: 122 x 90 x 141 (cm) / 48" x 35.4" x 55.5" (in.)
GENERAL SPECIFICATIONS	
<b>Conveyor Speed</b>	0.22 m/s (0.72 ft/s)
<b>Conveyor Height</b>	341 (mm)/ 13.4" (in.)
<b>Conveyor Capacity</b>	200 kg/440.9 lbs
<b>X-ray Dose/Inspection</b>	≤4μSv
<b>X-ray Leakage</b>	≤1μSv/h at any point 5 centimeters outside the external surface
<b>Penetration</b>	34mm /1.33" in. steel
<b>Wire Resolution</b>	Dia. 0.102mm copper wire (AWG38)
<b>Penetration Resolution</b>	Dia. 0.202mm copper wire (AWG32) under three-step aluminum wedge 9.5mm, 15.9mm, 22.2mm
<b>Spatial resolution</b>	Horizontal: dia. 1.3mm, Vertical: dia. 1.3mm
<b>Power Consumption</b>	Max. 1KW
<b>Power Current</b>	Max. 5mA
<b>Noise</b>	<60 dB
<b>Film Safety</b>	Guarantee ASA/ISO1600 Film
X-RAY GENERATOR (SINGLE)	
<b>Anode Voltage</b>	140-160 KV Adjustable
<b>Ray Direction</b>	Downward
<b>Cooling / Duty Cycle</b>	Oil Cooling /100%
IMAGE SYSTEM	
<b>X-ray Sensor</b>	L-Shaped Photodiode Array, 12bit deep
<b>Image Display</b>	High resolution of 1024 x 1280 pixel; Image Grey Level: 4096
<b>Images Process</b>	24bit real time processing ,4colors analysis, Images displayed marked date and ID No., Count the number of bags
<b>Image Enhancement</b>	1-64times enlargement continuity, Color/BW, negative, high/low penetration enhancement, brightening, darkening, gray level scan, super enhancement, elimination of organic/inorganic materials, local enhancement, pseudo color processing, edge enhancement, etc.
<b>Image Recall</b>	30 images recallable
<b>Explosives &amp; Narcotics Detection</b>	Suspicious organics highlight (atomic number Zeff=7,8,9)
<b>Alarm</b>	Alarm and box outlines the suspicious objects including hard to penetrate material, explosives and drugs
<b>Threat Image Projection (TIP)</b>	Insertion of fictional but realistic images of threatening items into baggage during screening operation for training purposes to assess image identification capabilities
<b>Image Archive</b>	Up to 50,000 images stored automatically, enable transferring to USB disk, and converting to JPG, BMP and other general formats
<b>Miscellaneous Functions</b>	Time/date display, counters, user management, system-on/ X-ray on timers, power on self test, built-in diagnostic facilities, dual-direction scanning, system log, system standby and simulation training etc.

<b>Network Applications (Optional)</b>	Multiple remote applications available based on Ethernet LAN and windows platform, such as image centralized storage and identify, recheck workstation, etc.
<b>OPERATING ENVIRONMENT</b>	
<b>Operation temperature</b>	5°C to 40°C (41°F to 104°F) / 0%-90%(non-condensing)
<b>Storage Temperature</b>	-40°C to 70°C (-4°F to 140°F) / 10%-90%(non-condensing)
<b>Operation Power</b>	220VAC(±10%) 50±3Hz (Optional: 100VAC, 110VAC, 120VAC, 200VAC)
<b>Stabilizer and UPS</b>	Stabilizer optional. UPS options: 15mins, 30mins, 60mins etc.
<b>COMPUTER AND OTHER</b>	
<b>Monitor</b>	2x 17" in. LCD monitors, 1280 x 1024, one console desk
<b>RAM</b>	4GB
<b>Hard Disk</b>	2TB
<b>Keyboard</b>	Special designed
<b>System</b>	Windows® 10
<b>Electric roller</b>	Three-phase
<b>COMPLIANCE</b>	
<b>Certificates</b>	ISO19001 ; ISO14001 ; OHSMS18001 ; CE RoHS FDA FCC

## Imaging



## Dimensions

