



Specifications:

Turnstile type: Single full-height turnstile

Container Size: 6100 x 2600 mm / 240 x 103 inches

Turnstile Dimension: 1500 x 1350 x 2250mm (L*W*H) / 59 x 53 x 89 inches

Passage width: 1525 mm / 60 inches

Direction: Single/Bidirectional

Function: Automatic open when emergency

Power supply: AC110–220V, 50/60Hz

Working environment: Indoor & Outdoor

Container Material:

1. CORTEN weathering steel

The main purpose:

All the boxes of the dry container

2. MGSS stainless steel (Muffler GRADE STAINLESS STEEL)

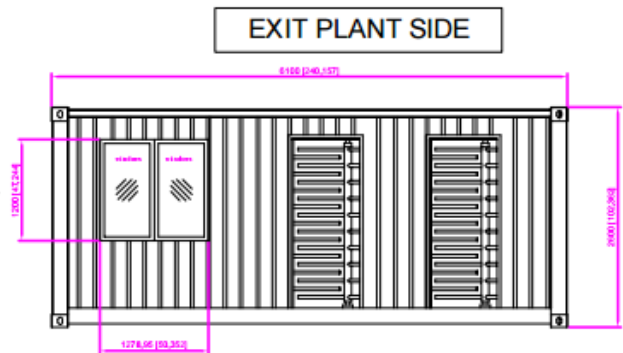
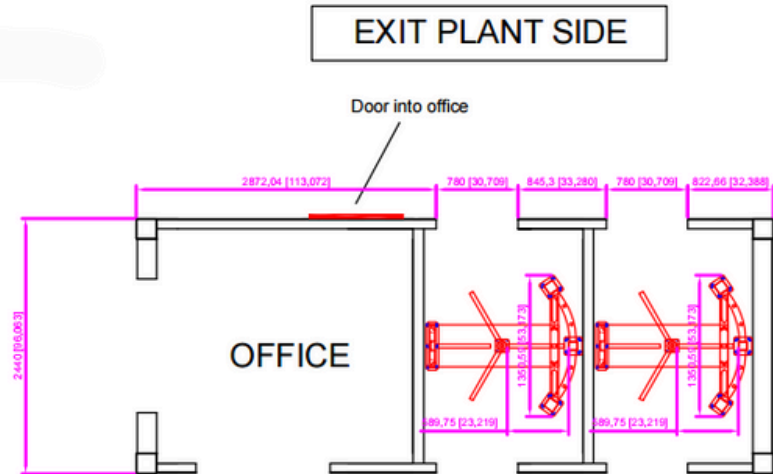
Main application: outer panels, outer roof panels, outer door panels, corrugated bottom panels of refrigerated containers sometimes applied to frame structures

Add on options:

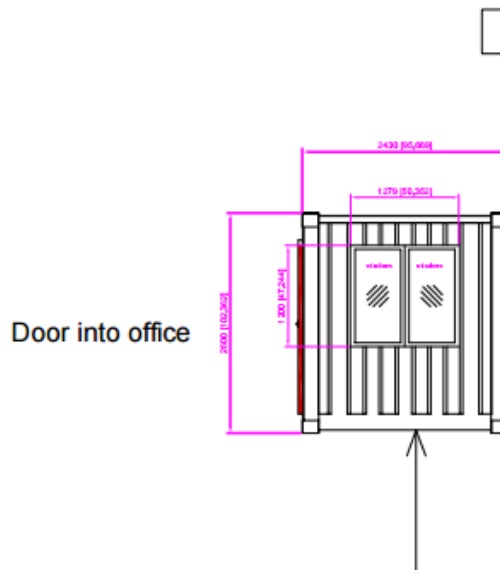
- Small office
- Small kitchen
- Toilet Cabin
- Guard Shack

Drawings: (Option #1 - (2) Full-height turnstiles + Attached office)

Dimensions are in mm.



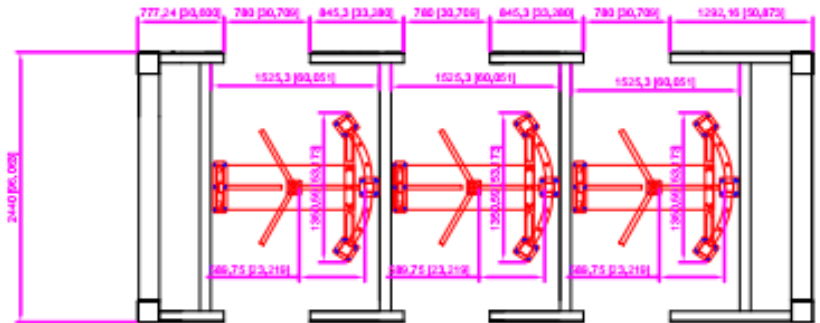
VIEW OF THIS SIDE



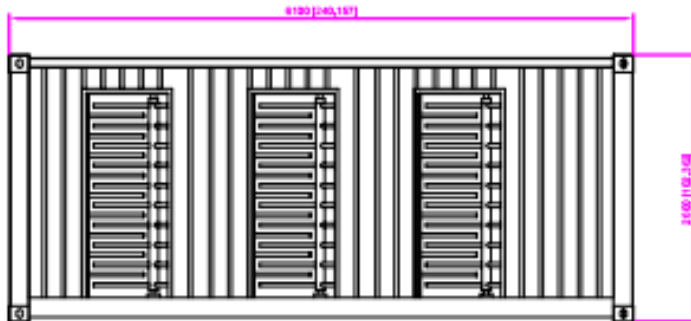
Drawings: (Option #2 - (3) Full-height turnstiles)

Dimensions are in mm.

EXIT PLANT SIDE



EXIT PLANT SIDE



EXIT PLANT SIDE

